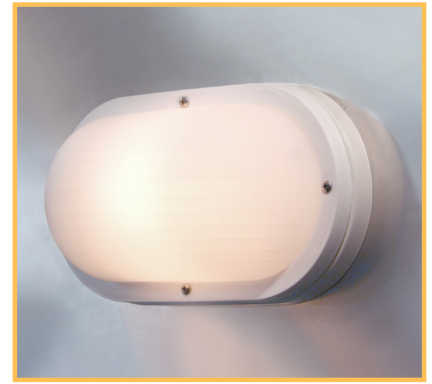


EUROSTYLE COLLECTION

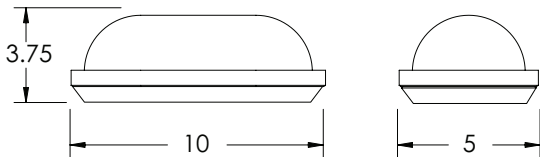
- WALL MOUNT FIXTURES
- AVAILABLE IN BLACK OR WHITE WITH FROSTED LENSES
- FLUORESCENT AND INCANDESCENT CONFIGURATIONS AVAILABLE
- PHOTOCELL AVAILABLE ON SELECT MODELS
- MOLDED OF DURABLE UV RESISTANT PLASTICS
- ASSEMBLED OR KNOCKED DOWN

SPECIFICATIONS

- UL LISTED FOR WET LOCATIONS
- ALUMINUM BACK PAN (COMMERCIAL GRADE MODELS ONLY)
- STANDARD PACK QTY: 6 MOQ: 72



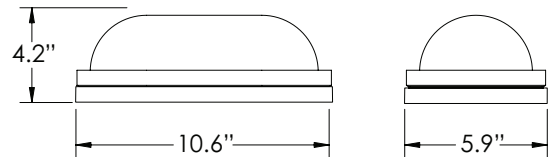
EUROSTYLE OVAL **ADA compliant**



PLASTIC BACK PAN



COMMERCIAL GRADE EUROSTYLE OVAL



ALUMINUM BACK PAN

EXAMPLE PART # **F5001WFI**

STYLE #	WATTAGE	BODY	LENS	PACKAGING
EUROSTYLE OVAL				
F5001	1-60W INCANDESCENT **	B = BLACK W = WHITE	F = FROSTED	I = INDIVIDUAL
F3001	1-CFT9W MAGNETIC FLUORESCENT **			
F4001	1-CFQ13W MAGNETIC FLUORESCENT			
F5001E	1-CFQ13W ELECTRONIC FLUORESCENT			
F4001E	1-CFQ18W ELECTRONIC FLUORESCENT			
COMMERCIAL GRADE EUROSTYLE OVAL				
F3311	1-CFT13W/GX23 MAGNETIC FLUORESCENT	B = BLACK W = WHITE	F = FROSTED	I = INDIVIDUAL
F3311P	1-CFT13W/GX23 MAGNETIC FLUORESCENT W/PHOTOCELL			
F3321	2-CFT13W/GX23 MAGNETIC FLUORESCENT			
F3321P	2-CFT13W/GX23 MAGNETIC FLUORESCENT W/PHOTOCELL			
F3351E	1-CFQ13W/G24q ELECTRONIC FLUORESCENT			
F3351P*	1-CFQ13W/G24q ELECTRONIC FLUORESCENT W/PHOTOCELL			
F3361E	2-CFQ13W/G24q ELECTRONIC FLUORESCENT			
F3361P*	2-CFQ13W/G24q ELECTRONIC FLUORESCENT W/PHOTOCELL			
F3611E	1-CFQ26W/G24 or CFTR32W/GX24q ELECTRONIC FLUORESCENT			
F3611P*	1-CFQ26W/G24 or CFTR32W/GX24q ELECTRONIC FLUORESCENT W/PHOTOCELL			

* ENERGY STAR COMPLIANT

** EXPLODED VIEW AVAILABLE ON CD

For more information regarding Inter-Global's Assembled Fixtures
Please contact our sales department at **1-800-325-7364** or visit www.interglobal-inc.com

Specifications subject to change without notice. Printed in U.S.A. © 2010 Inter-Global Inc.



1003.1