

EUROSTYLE COLLECTION

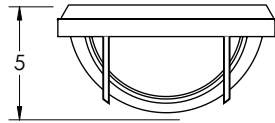
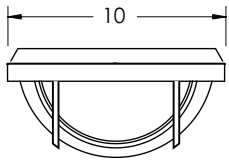
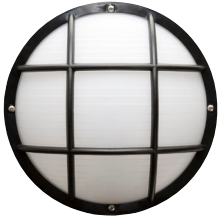
- WALL/CEILING MOUNT FIXTURES
- AVAILABLE IN BLACK OR WHITE WITH FROSTED LENSES
- FLUORESCENT AND INCANDESCENT CONFIGURATIONS AVAILABLE
- PHOTOCELL AVAILABLE ON SELECT MODELS
- MOLDED OF DURABLE UV RESISTANT PLASTICS
- ASSEMBLED OR KNOCKED DOWN

SPECIFICATIONS

- UL LISTED FOR WET LOCATIONS
- ALUMINUM BACK PAN (COMMERCIAL GRADE MODELS ONLY)
- STANDARD PACK QTY: 12 MOQ: 72

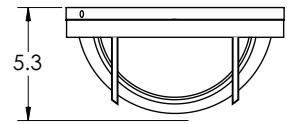
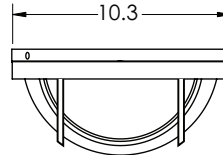


EUROSTYLE ROUND GRID



PLASTIC BACK PAN

COMMERCIAL GRADE EUROSTYLE ROUND GRID



ALUMINUM BACK PAN

EXAMPLE PART # **F5081BFI**

STYLE #	WATTAGE	BODY	LENS	PACKAGING
EUROSTYLE ROUND GRID				
F5081	1-75W INCANDESCENT **	B = BLACK W = WHITE	F = FROSTED	I = INDIVIDUAL
F3081	2-CFT9W MAGNETIC FLUORESCENT **			
F4081	1-CFQ13W MAGNETIC FLUORESCENT			
F5081E	1-CFQ13W ELECTRONIC FLUORESCENT			
F4081E	1-CFQ18W ELECTRONIC FLUORESCENT			
COMMERCIAL GRADE EUROSTYLE ROUND GRID				
F3281	1-CFT13W/GX23 MAGNETIC FLUORESCENT	B = BLACK W = WHITE	F = FROSTED	I = INDIVIDUAL
F3281P	1-CFT13W/GX23 MAGNETIC FLUORESCENT W/PHOTOCELL			
F3283	2-CFT13W/GX23 MAGNETIC FLUORESCENT			
F3283P	2-CFT13W/GX23 MAGNETIC FLUORESCENT W/PHOTOCELL			
F3481E	1-CFQ13W/G24q ELECTRONIC FLUORESCENT			
F3481P*	1-CFQ13W/G24q ELECTRONIC FLUORESCENT W/PHOTOCELL			
F3487E	2-CFQ13W/G24q ELECTRONIC FLUORESCENT			
F3487P*	2-CFQ13W/G24q ELECTRONIC FLUORESCENT W/PHOTOCELL			
F3588E*	1-CFQ26W/G24 or CFTR32W/GX24q ELECTRONIC FLUORESCENT			
F3588P**	1-CFQ26W/G24 or CFTR32W/GX24q ELECTRONIC FLUORESCENT W/PHOTOCELL			
F3589E*	2-CFQ26W/G24 or CFTR32W/GX24q ELECTRONIC FLUORESCENT			
F3589P**	2-CFQ26W/G24 or CFTR32W/GX24q ELECTRONIC FLUORESCENT W/PHOTOCELL			

* ENERGY STAR COMPLIANT ** EXPLODED VIEW AVAILABLE ON CD • WALL MOUNT ONLY

For more information regarding Inter-Global's Assembled Fixtures
Please contact our sales department at **1-800-325-7364** or visit www.interglobal-inc.com

Specifications subject to change without notice. Printed in U.S.A. © 2010 Inter-Global Inc.

