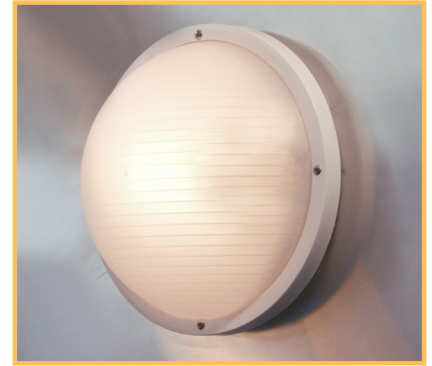


EUROSTYLE COLLECTION

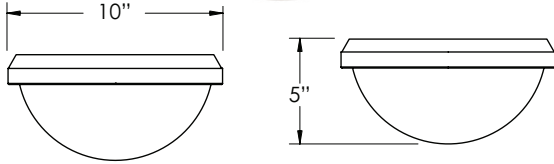
- WALL/CEILING MOUNT FIXTURES
- AVAILABLE IN BLACK OR WHITE WITH FROSTED LENSES
- FLUORESCENT AND INCANDESCENT CONFIGURATIONS AVAILABLE
- PHOTOCELL AVAILABLE ON SELECT MODELS
- MOLDED OF DURABLE UV RESISTANT PLASTICS
- ASSEMBLED OR KNOCKED DOWN



SPECIFICATIONS

- UL LISTED FOR WET LOCATIONS
- ALUMINUM BACK PAN (COMMERCIAL GRADE MODELS ONLY)
- STANDARD PACK QTY: 12 MOQ: 72

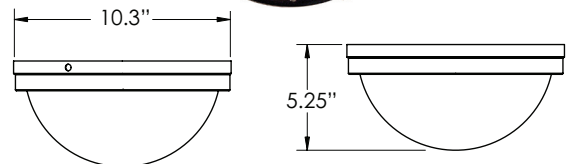
EUROSTYLE ROUND



PLASTIC BACK PAN



COMMERCIAL GRADE EUROSTYLE ROUND



ALUMINUM BACK PAN

EXAMPLE PART # **F5051WFI**

STYLE #	WATTAGE	BODY	LENS	PACKAGING
EUROSTYLE ROUND				
F5051	1-75W INCANDESCENT **	B = BLACK W = WHITE	F = FROSTED	I = INDIVIDUAL
F3051	2-CFT9W MAGNETIC FLUORESCENT **			
F4051	1-CFQ13W MAGNETIC FLUORESCENT			
F5051E	1-CFQ13W ELECTRONIC FLUORESCENT			
F4051E	1-CFQ18W ELECTRONIC FLUORESCENT			
COMMERCIAL GRADE EUROSTYLE ROUND				
F3251	1-CFT13W/GX23 MAGNETIC FLUORESCENT	B = BLACK W = WHITE	F = FROSTED	I = INDIVIDUAL
F3251P	1-CFT13W/GX23 MAGNETIC FLUORESCENT W/PHOTOCELL			
F3253	2-CFT13W/GX23 MAGNETIC FLUORESCENT			
F3253P	2-CFT13W/GX23 MAGNETIC FLUORESCENT W/PHOTOCELL			
F3461E	1-CFQ13W/G24q ELECTRONIC FLUORESCENT			
F3461P*	1-CFQ13W/G24q ELECTRONIC FLUORESCENT W/PHOTOCELL			
F3467E	2-CFQ13W/G24q ELECTRONIC FLUORESCENT			
F3467P*	2-CFQ13W/G24q ELECTRONIC FLUORESCENT W/PHOTOCELL			
F3591E*	1-CFQ26W/G24 or CFTR32W/GX24q ELECTRONIC FLUORESCENT			
F3591P*•	1-CFQ26W/G24 or CFTR32W/GX24q ELECTRONIC FLUORESCENT W/PHOTOCELL			
F3593E*	2-CFQ26W/G24 or CFTR32W/GX24q ELECTRONIC FLUORESCENT			
F3593P*•	2-CFQ26W/G24 or CFTR32W/GX24q ELECTRONIC FLUORESCENT W/PHOTOCELL			

* ENERGY STAR COMPLIANT ** EXPLODED VIEW AVAILABLE ON CD • WALL MOUNT ONLY

For more information regarding Inter-Global's Assembled Fixtures
Please contact our sales department at **1-800-325-7364** or visit www.interglobal-inc.com

Specifications subject to change without notice. Printed in U.S.A. © 2010 Inter-Global Inc.



1003.1