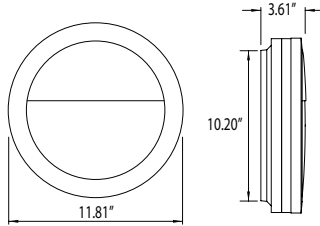


- Available in LED
- Powder Coated Cast Aluminum
- Wall or Ceiling Mount
- Enclosed & Gasketed
- ETL Listed for Wet Locations (IP65)
- Standard Pack QTY: 6

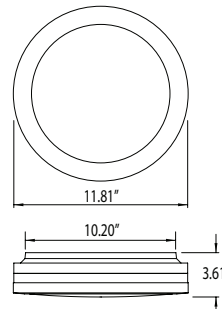
LUNAR



FL372



FL371



RoHS compliant



EXAMPLE # FL371-LE1200W-BWM

| STYLE # | LIGHT SOURCE | BODY | DIFFUSER | OPTIONS |
|------------------------------|---|--|--|-------------------------|
| FL371 FL372 | EOS LED 120V AC, 50/60 Hz, HPF, 50,000 HRS L70*, AMBIENT OP TEMP -40°C TO +40°C, 5 YEAR WARRANTY, DIMMABLE, ENERGY STAR | B -Black W -White | P OLYCARBONATE W -White | M -Motion Sensor |
| | LE1200 - 14W Power Input CRI 80 (TYP) >80 Lumens Per Watt** | W -1350lm 3000K C -1400lm 4000K | | |
| | LE1800 - 23W Power Input CRI 80 (TYP) >80 Lumens Per Watt** | W -1850lm 3000K C -1900lm 4000K | | |

*DATA PER LM79/LM80/TM21 & IES FILES AVAILABLE UPON REQUEST

**ESTIMATED FROM LED SOURCE



Scan the QR code to the left to access the Energy Star qualified product list.

Fixtures available with custom packaging options, assembled or knocked down. MOQs apply.

For more information contact our sales department at 1-800-325-7364 or visit www.interglobal-inc.com